

Sept. 2014 CLiC  
Open House

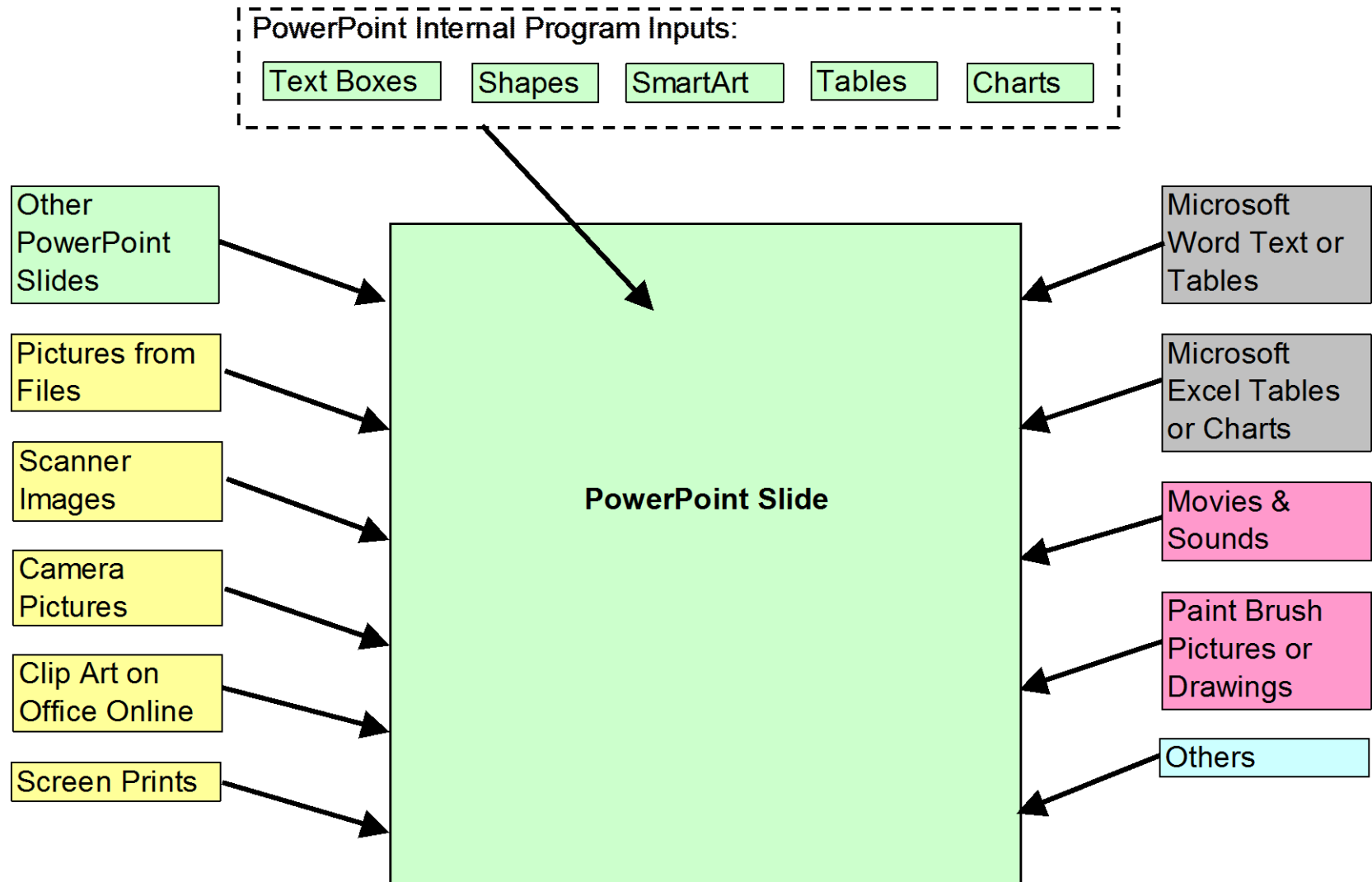
**Microsoft PowerPoint**

# Discussion Topics

## Who uses PowerPoint?

- Businesses:
  - Used to make presentation to employee groups
  - Used to present sales and marketing information to new and current customers
- Individuals:
  - Wedding invitations / maps to destinations / fliers / signs
  - Electronic alternative to creating a manual photo scrap book
  - Create photo slide shows for celebrating birthdays, vacations, special event, funeral memorials
  - Organize information and data to display

# An Overview of Microsoft PowerPoint



# Examples of PowerPoint Projects



# GLASS

RETURNS ONLY





# Fliers and Invitations



**18<sup>th</sup> Annual**

## **Ford Tractor Holiday Party**

All ex-Tractortites Welcome!



Thursday, December 7, 2006

**Marinelli's**

**4924 Rochester Road**

Rochester Rd & Long Lake – 18 Mile

**4:00 PM until ??**

For further information contact:

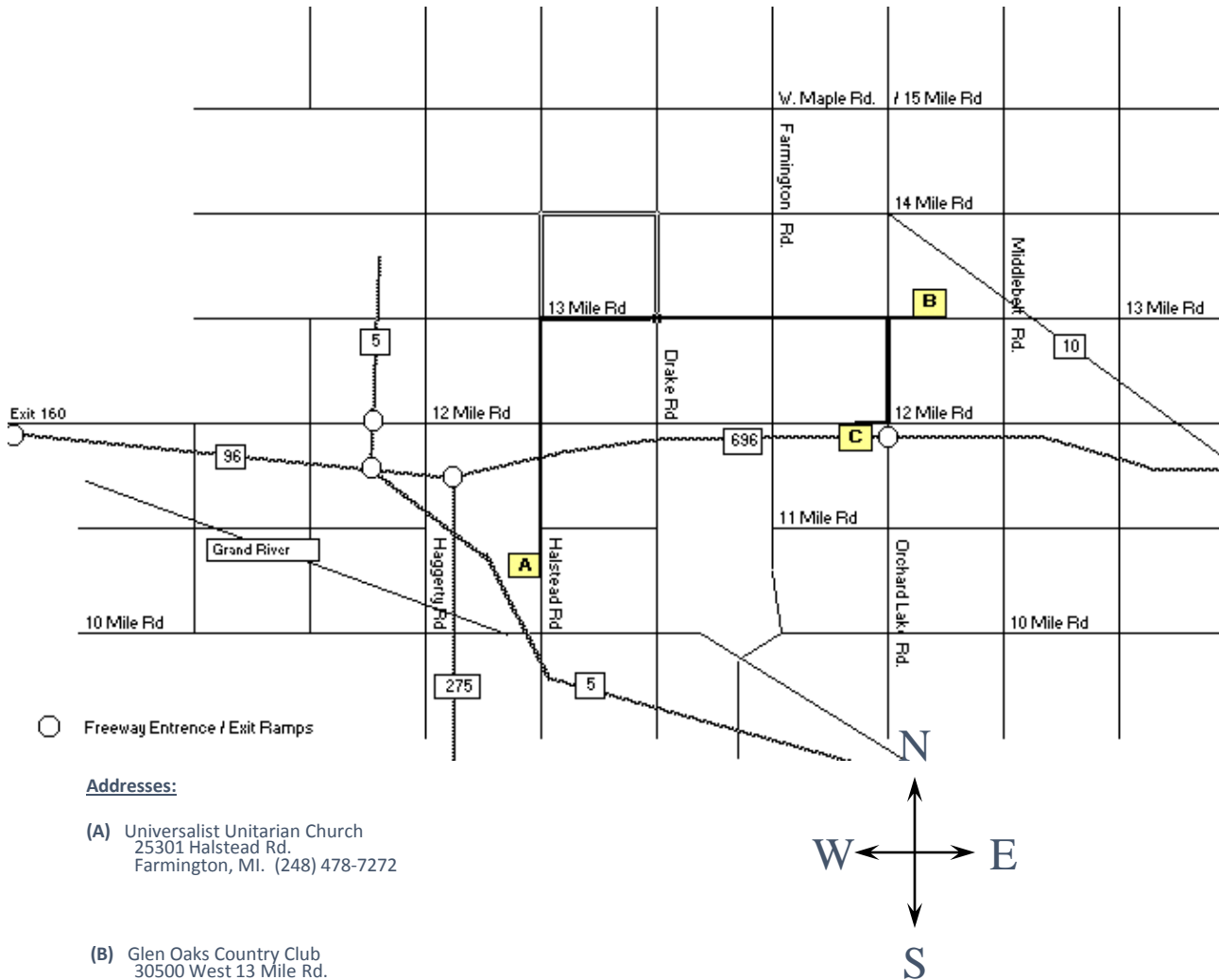
Name, Phone No., Email address

Cash Bar/Food

No RSVP



## Maps to Destinations



### Directions From The:

**North:** Follow US23 South to I-96 East. Follow I-96 East to Exit #160 (12 Mile Rd.). East on 12 Mile Rd. approx. 5 miles to Halstead Rd. Turn South, go 1.2 miles to Church on West side of Halsted Rd.

**South-East:** Follow Telegraph Rd. North and turn Right on M5 and go West approx. 8 miles. Continue on ramp at sign reading "Gd River Ave. / 10 Mile Rd" and go North 400 feet. Continue on Halsted Rd and go North for 0.9 miles to the Church on West side of Halsted Rd.

**South-West:** Follow I-275 North to M5. Continue on M5 then exit at 12 mile, East. Continue East approx. 1.5 miles and turn Right on Halstead Rd. Turn South, go 1.2 miles to Church on West side of Halsted Rd.

**East:** Follow I-696 West to Exit #5 (Orchard Lake Rd). Turn right on Orchard Lake Rd. and go North 500 feet. Turn Left on 12 Mile Rd and go West for 3.1 miles. Turn Left on Halsted Rd and go South 1.2 miles to Church on West side of Halsted Rd.

**West:** Follow I-96 East to Exit #160 (12 Mile Rd.). Continue East on 12 Mile Rd. approx. 5 miles to Halstead Rd. Turn South 1.2 miles to Church on West side of Halsted Rd.

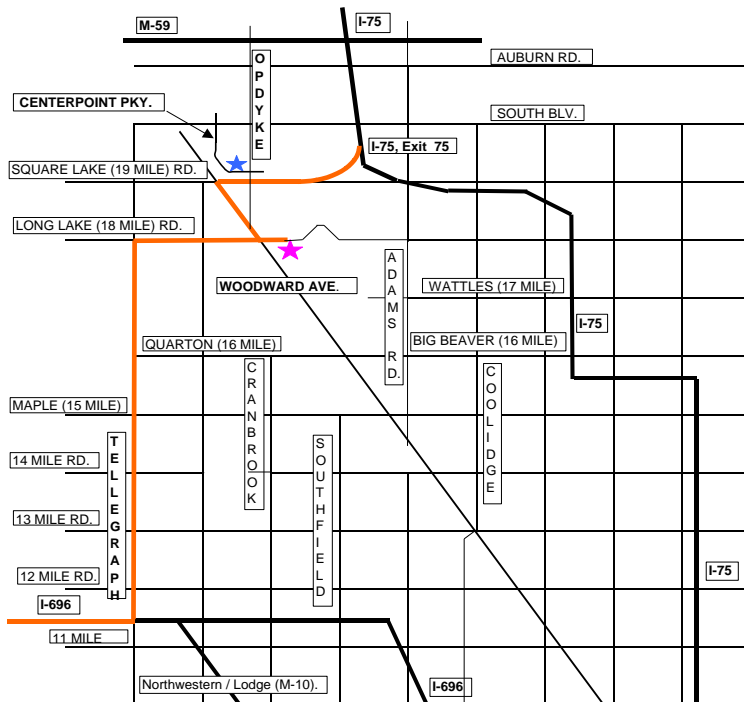
### Addresses:

- (A) Universalist Unitarian Church  
25301 Halstead Rd.  
Farmington, MI. (248) 478-7272
- (B) Glen Oaks Country Club  
30500 West 13 Mile Rd.  
Farmington Hills, MI. (248) 626-2600
- (C) Best Western Executive Hotel & Suites  
31525 West 12 Mile Rd.  
Farmington Hills, MI

Please ask for Garden-McLean block of rooms for best rates.

For reservations call: 1-800-528-1234

**Church to Reception Hall:** Go North on Halstead Rd. to 13 Mile Rd. Turn right on 13 Mile. Go East 3.2 miles to Glenn Oaks Country Club on the North side of 13 Mile Rd.



#### Coming From the West (Lansing):

- West on I-96 to I-696 (stay in left two lanes of I-96 to merge onto I-696)
- I-696 to Telegraph (North)
- Telegraph (North) to Long Lake Rd. (East)
- Long Lake Rd. (East) to (south side of the road)

#### Coming From the North:

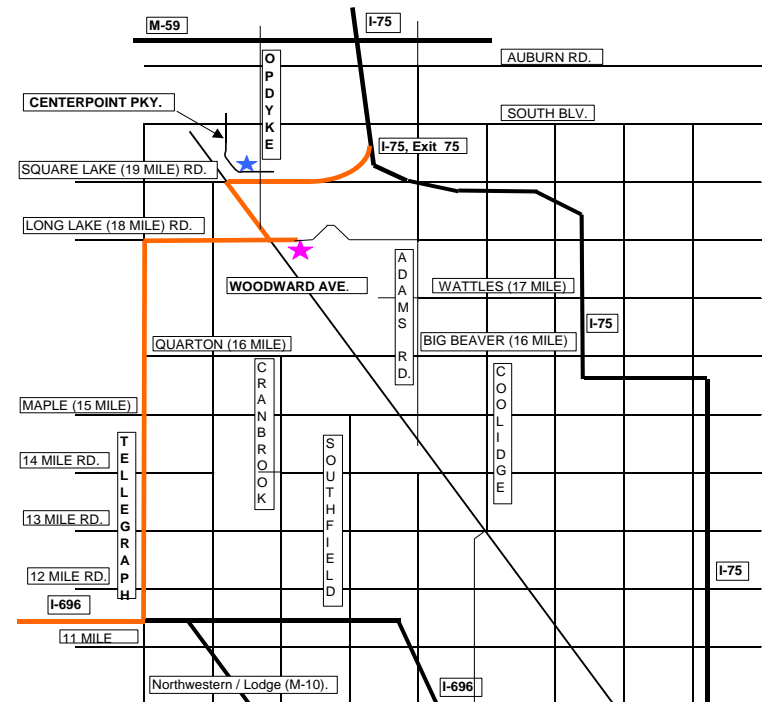
- South on I-75 to W. Square Lake Rd. (Exit #75).
- W. Square Lake Rd. (West) to Woodward Ave. (South).
- Note: Stay in the right lane to turn right to make a left-turn-around to go South on Woodward.
- Woodward (South) to W. Long Lake Rd. Note: Stay in the left lane of woodard & go through the intersection to make a left-turn-around to go East on Long Lake Rd.
- Long Lake Rd. (East) to (south side of the road).

#### Reception Location:

**THE VILLAGE CLUB**  
**190 EAST LONG LAKE RD.**  
**BLOOMFIELD HILLS, MI.**  
**48304**

#### Hotel:

**Courtyard - Marriott**  
**3555 Centerpointe Pkwy**  
**Pontiac, MI 48341**  
**Phone # 248-858-9595**  
**(North side of the road)**



#### Coming From the West (Lansing):

- West on I-96 to I-696 (stay in left two lanes of I-96 to merge onto I-696)
- I-696 to Telegraph (North)
- Telegraph (North) to Long Lake Rd. (East)
- Long Lake Rd. (East) to (south side of the road)

#### Coming From the North:

- South on I-75 to W. Square Lake Rd. (Exit #75).
- W. Square Lake Rd. (West) to Woodward Ave. (South).
- Note: Stay in the right lane to turn right to make a left-turn-around to go South on Woodward.
- Woodward (South) to W. Long Lake Rd. Note: Stay in the left lane of woodard & go through the intersection to make a left-turn-around to go East on Long Lake Rd.
- Long Lake Rd. (East) to (south side of the road).

#### Reception Location:

**THE VILLAGE CLUB**  
**190 EAST LONG LAKE RD.**  
**BLOOMFIELD HILLS, MI.**  
**48304**

#### Hotel:

**Courtyard - Marriott**  
**3555 Centerpointe Pkwy**  
**Pontiac, MI 48341**  
**Phone # 248-858-9595**  
**(North side of the road)**



# Create “How To” Instructions

# Winterize RV - Drain the fresh water storage tank



Remove drain plug and drain water.

# Winterize RV - Drain the hot water heater



Use 1 1/16 socket with extension to remove sacrificial anode.



Reinstall anode with new plumber's tape.

This is the cold water feed valve to the hot water tank in the normal (on) position.



This is the cold water feed valve in the bypass position for pumping antifreeze through the lines. Turn to this position for winterizing. Turn to above (on) position after antifreeze has been added.



Leave in this position for de-winterizing in the spring.



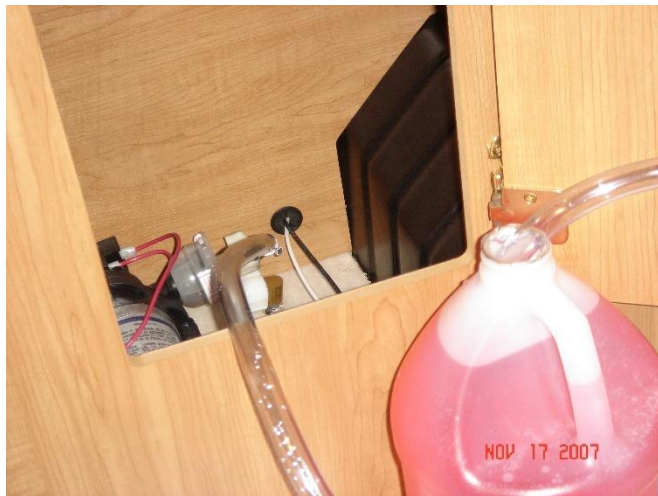
# Winterize RV - Getting ready to pump in antifreeze



Remove the two screws in cabinet floor to access the water pump.

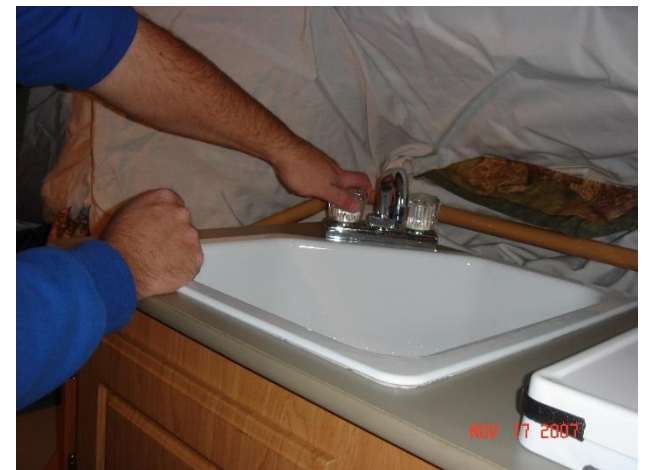


Remove pump outlet hose and replace with antifreeze jumper hose.



Insert hose into antifreeze jug. Turn pump on. See next slide for pumping water through the faucets.

Open hot water valve first then cold until pink antifreeze flows.



# Winterize RV - Completing the job



Remove the drain cap to allow water and antifreeze to drain. Place bucket under outlet. Add the drain elbow to focused the drain water into a bucket.



While pump is on, turn on both hot and cold faucets until antifreeze runs from the showerhead.

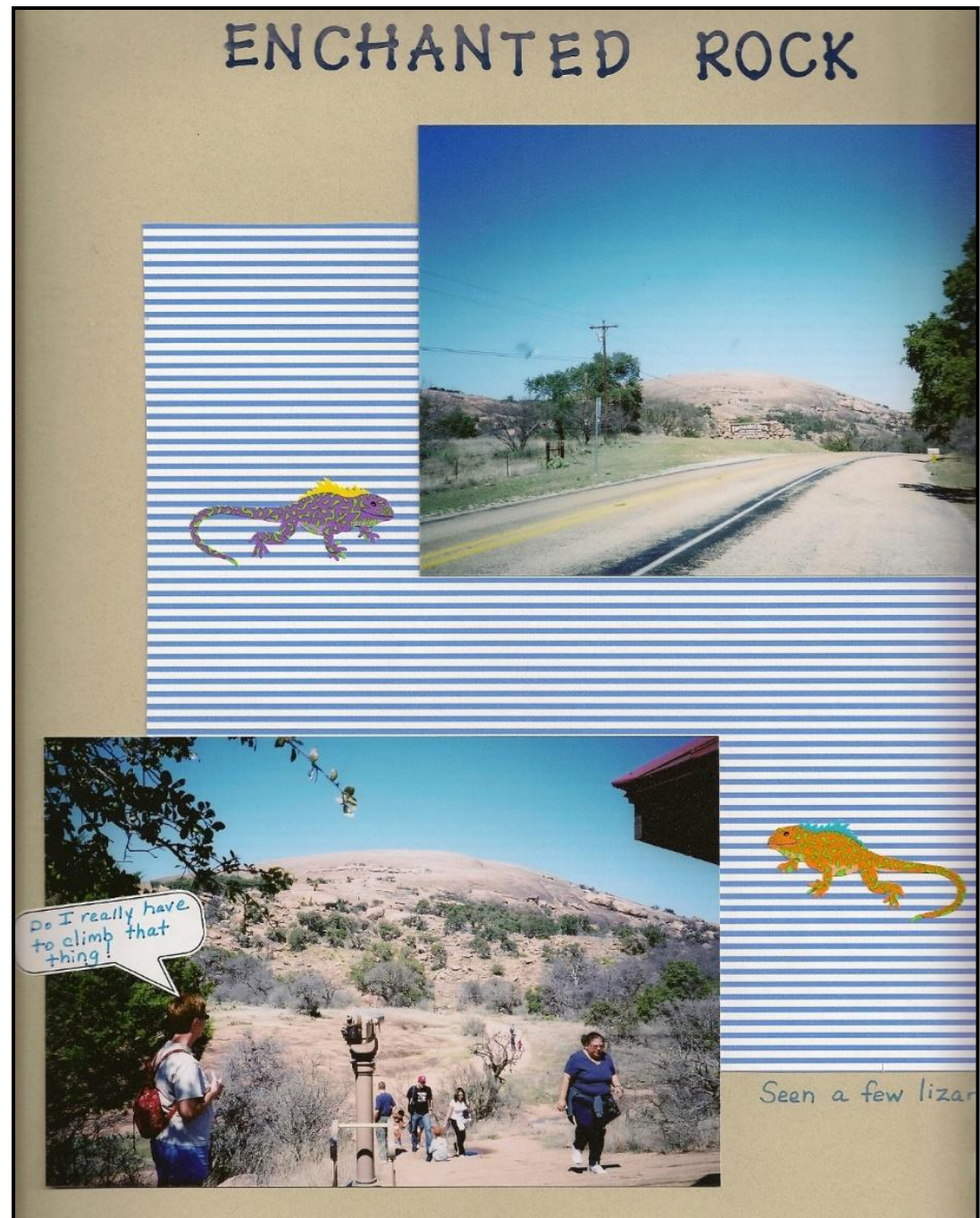
# Photo Collections



Let's consider a  
handmade page in a  
photo scrapbook

This is a scan of a  
handmade page in a  
photo scrapbook.

(It has a colored piece  
of background paper,  
a hand printed title,  
mount two pictures,  
two lizard graphics  
and some thoughts  
added about the  
event)



Now consider a PowerPoint slide instead of the scrap book page

This PowerPoint page consists of:

(A color selected for the slide background, a copy of a Microsoft Excel file with rows underlined in blue, two pictures inserted on the slide, two lizard graphics, a slide title and two text boxes to recall some thoughts about the event)

# ***ENCHANTED ROCK***



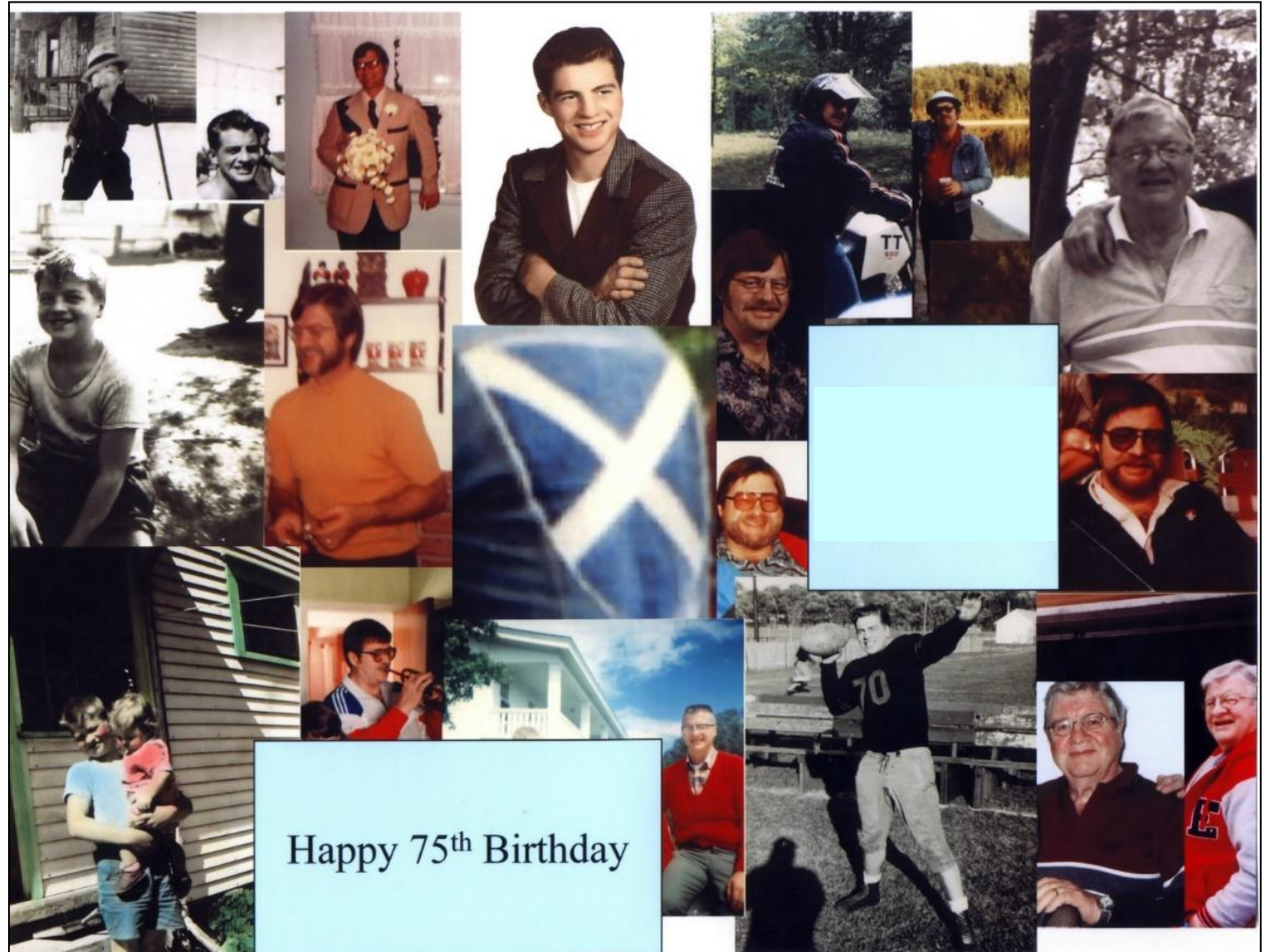
*Seen a few lizards*



# Lifetime Memories

Photos and scanned picture images on a single page.

The page is  
the last page of  
99 slides used  
for a birthday  
slide show.

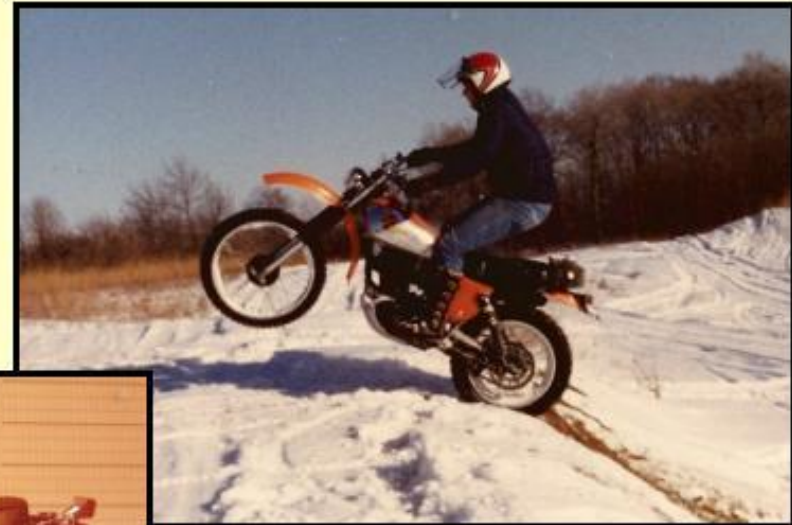


1970  
Honda  
SL-350  
(1972-  
1975)



L  
Y  
N  
N  
's

Honda  
XL-350  
(1975-  
1977)



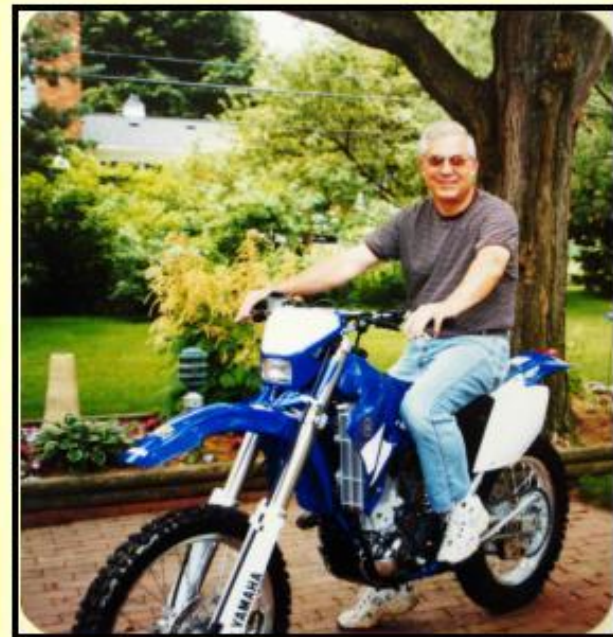
Yamaha TT-500 (1977-1986)

RIDES



Yamaha  
TT-600  
(1986-  
2003)

Yamaha  
WR-450  
(2003)





# U.P. Cycle Trip – Day One Ride

The lighthouse stop, page 1:



Friday (7/1)  
afternoon. We  
stopped at the Crisp  
Point Lighthouse  
(operational in 1904,  
decommissioned in  
1993)





# U.P. Cycle Trip – Day Two Ride

7/2-Two Heart to Grand Marais (thru Pine Stump Junction), page 1:



A deer camp with sauna and his & hers out-houses.

Water over the trail. The decision, go through or find a way around. It looks like everyone goes through! To answer the question, Melanie asked dad, "If Uncle Al and you came upon this, would you go through?", I said yes!





# Picture Collections

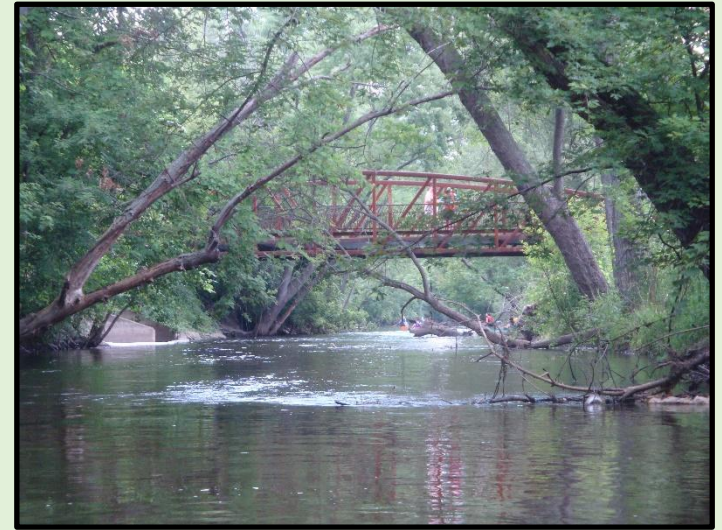
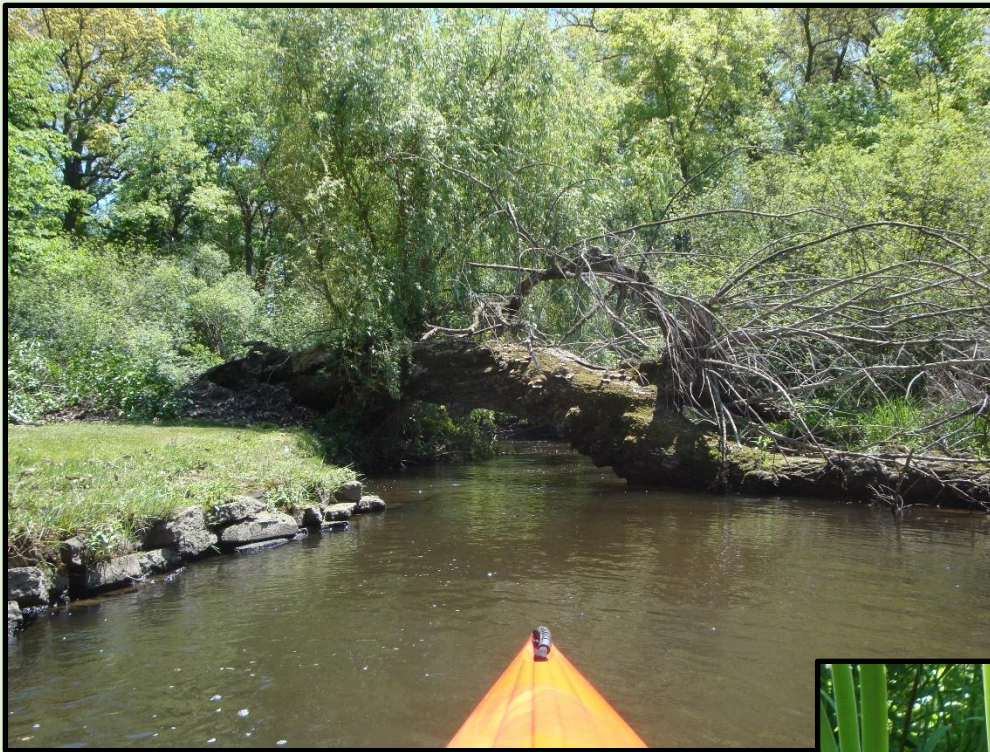


Jekyll Island, Georgia,  
Driftwood Beach  
(Northeast side)



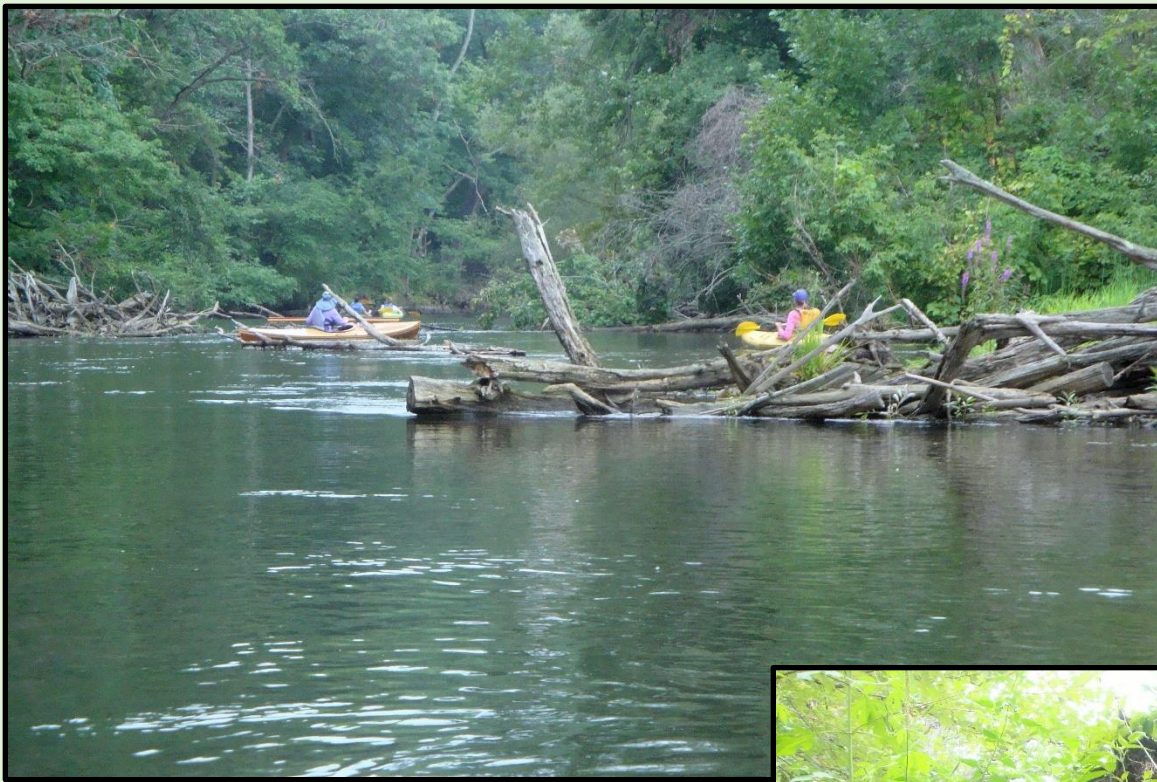


## G.R.E.A.T. Paddles





## G.R.E.A.T. Paddles





G.R.E.A.T.  
Paddles





# Information & Instructions

## Wagon Wheels - The Wood Working Process



### Spoke Making:

- Obtain rectangular Hickory blanks.
- Use a Saw and Wood Chisel to rough size the rectangular end which will be inserted into the wheel hub.



### Spoke Making:

- Use a Draw Knife and Spoke Shave to transition the spoke from the rectangular shape to the elliptical end at the rim of the wheel.



### Hub Making:

- Hubs were made from a solid piece of Oak or Elm. The bearing was cast iron.
- Steel hoops were shrunk onto the hub to improve strength and reduce splitting.



### Mating the Spokes to the Hub:

- All of the spokes are driven into rectangular Mortises in the hub.
- The hub and spoke assembly are mounted into a fixture and the spokes cut to length.



### Making the Spokes Ready to Fit into the Rim (Felloes):

- A Spoke Pointer (Cone Cutter) is used to make a round end on the spokes.
- A Hollow Auger (Tenon Cutter) is used to make a dowel end on the spoke.



### Assemble the Rim to Hub and Spokes:

- Use a special tool called a Spoke Puller to pry the spokes into alignment with the holes in the rim (Felloes). Rims for heavy duty wheel (Cannons) were made from rim segments containing two spokes.



### Setting the Rim Hot:

- Build a circular fire to heat and expand the steel tire
- Quickly pound the hot steel tire over the wood rim
- Quench with water to shrink the steel tire and stop burning of the wooden rim



### Axle Making:

- Shape a rectangular Oak beam to allow attachment of the Skein (metal wear surface)



# Animated & Video of Square Dance calls (Basic, Mainstream, Plus and Advanced Call Lists)

A narrator describes the movements of videoed square dancers executing square dance calls

- <http://www.videosquaredancelessons.com/lessons/index.htm>
- Under Lesson Index, **Click** on “**Review Main Stream Lesson**”
- **Click** on the “**Play**” box for the square dance call you wish to view



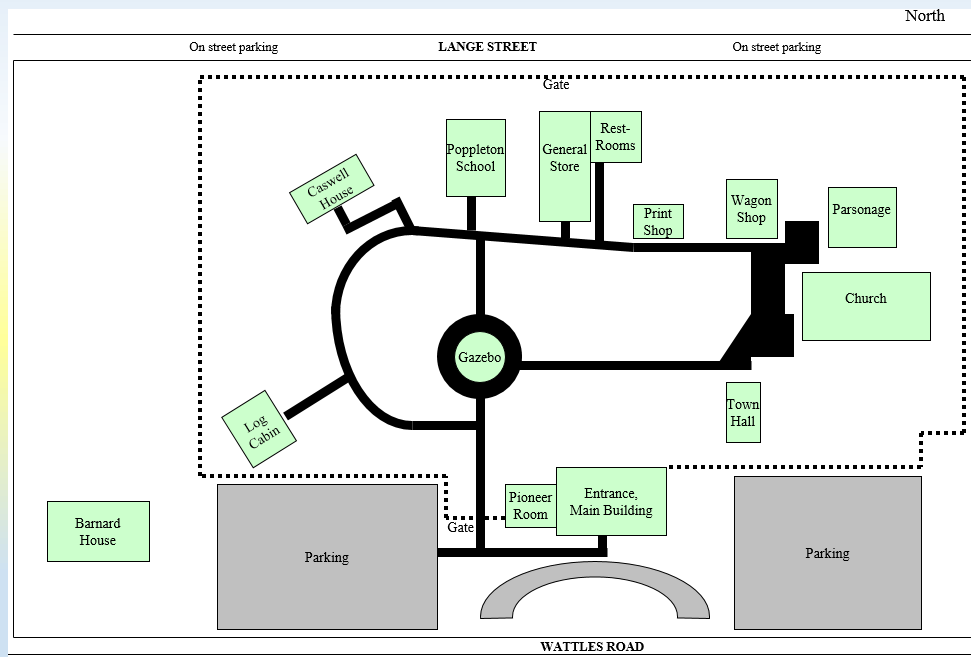
Uses animated colored squares and circles to show dancer movement for square dance calls

- <http://noriks.tripod.com/ENGLISH/514100e.html#BSD01>

01. Dancer Naming	
	People Involved
	START
	END
	Naming

(a) Partner / Corner: (b) Heads / Sides:  
(c) Couples #1, #2, #3, #4:  
(d) Boys / Girls:  
(e) Centers / Ends:

# Making the Troy Historic Village Grounds Map



Insert a satellite view  
of the property





Insert geometric shapes  
to represent the building,  
walkways, & add text

# Troy Historic Village

## “Civil War Candlelight Walk”

North

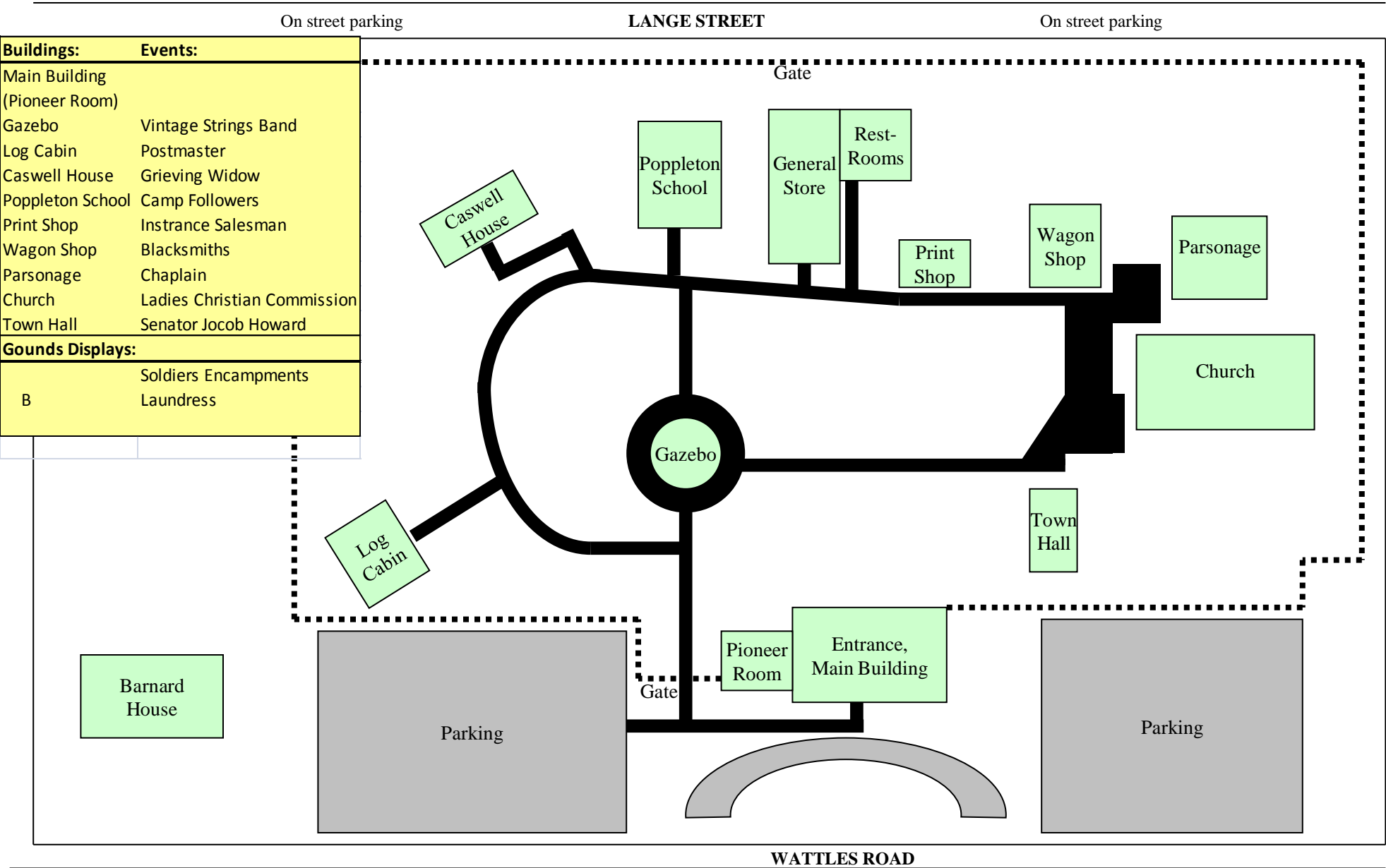


Delete the satellite  
image from behind all  
the other images

# Troy Historic Village

## “Civil War Candlelight Walk”

North



# Types of files that can be inserted on a PowerPoint slide

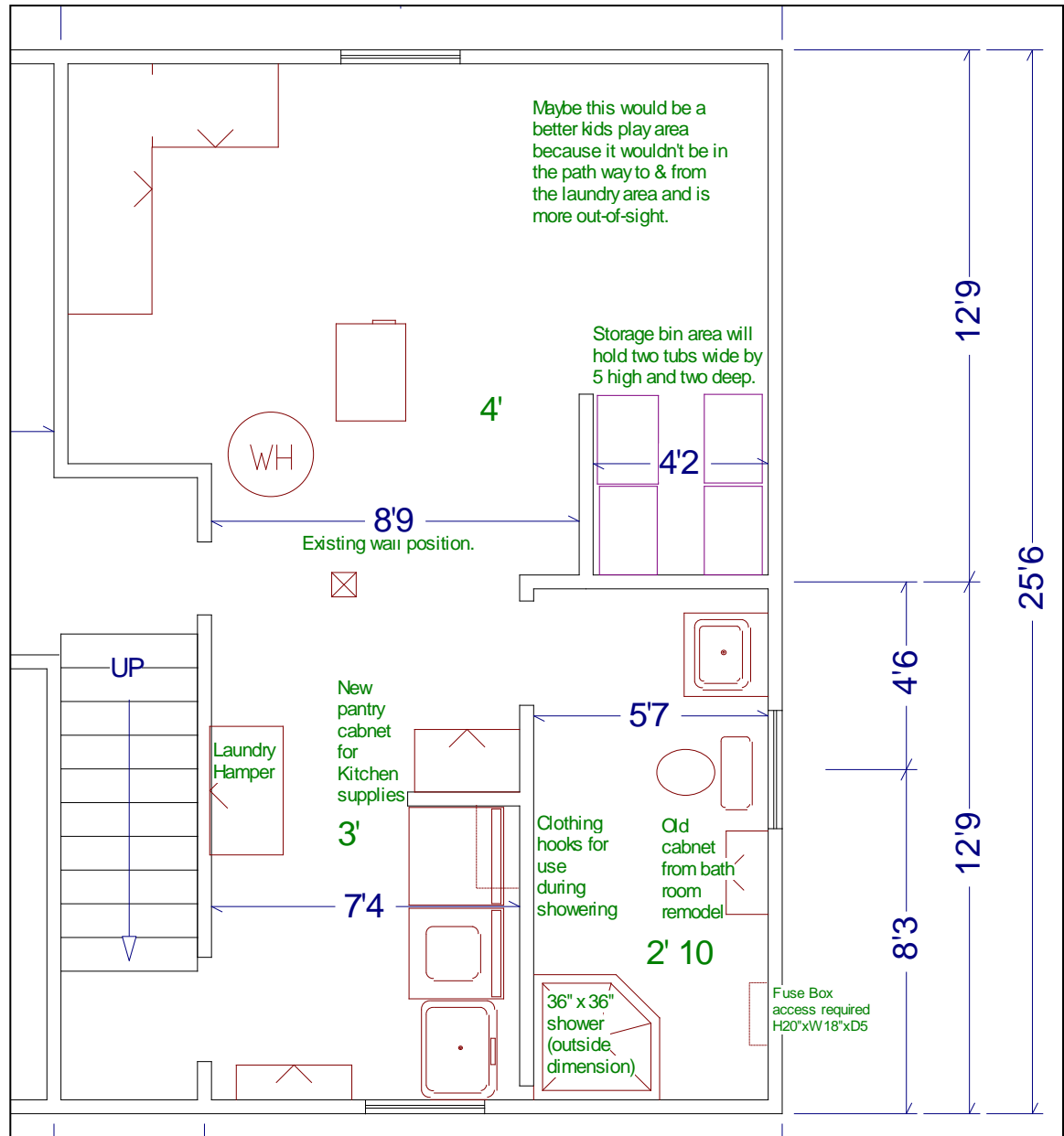


# File Formats Compatible with a PowerPoint Slide

All Files  
All Pictures  
Windows Enhanced Metafile  
Windows Metafile  
JPEG  
File Interchange Format  
Portable Network Graphics  
Windows Bitmap  
Graphic Inter Change Format  
Compressed Window Enhanced Metafile  
Compressed Windows Metafile  
Compressed Macintosh PICT  
TAG Image File Format  
CorelDraw  
Computer Graphics Metafile  
Encapsulated PostScript  
Macintosh PICT  
WordPerfect Graphics

This is a 3D  
Home Architect  
program file  
output.

File was  
inserted into a  
PowerPoint  
slide so it could  
be emailed to  
the people who  
were  
considering the  
project.



# Movie Clips May be Inserted into a Slide

This movie was taken  
with a cell phone



# Movie Clips May be Inserted into a Slide

This movie was taken  
with a cell phone

With music added

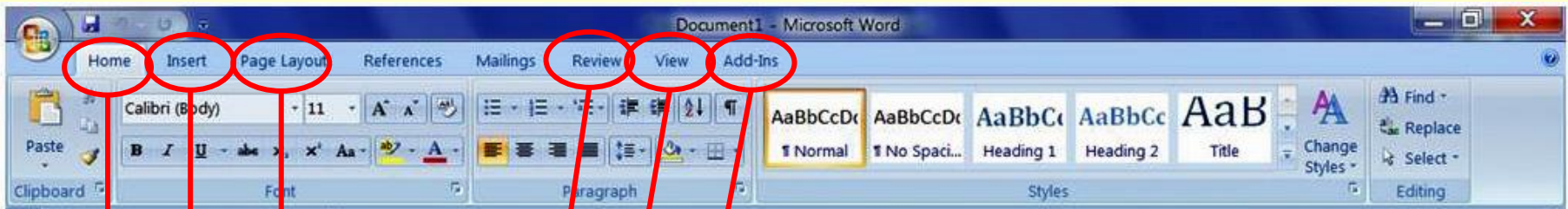


# How to Get Started

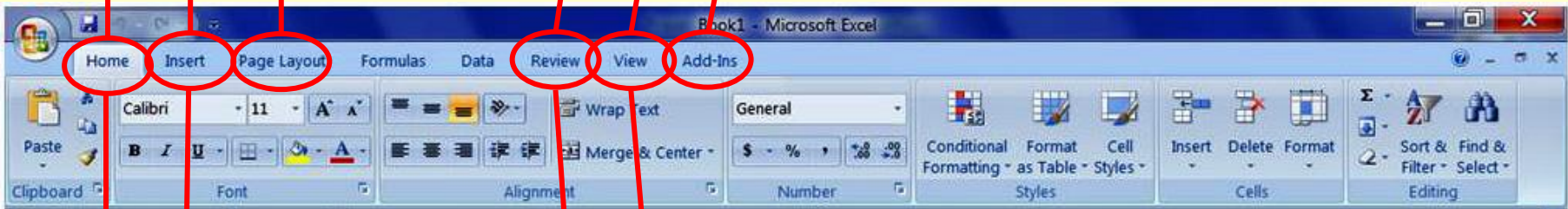
- Have a desire to build a project using the capability and tools of PowerPoint
- Have a working knowledge of PowerPoint course Prerequisites (depends on project complexity)
  - Microsoft Excel 2000 or higher
  - Microsoft Word 2000 or higher
  - The Internet
  - Use of a Printer (optional)

# Lets Look at What You May Already Know – The Ribbons used for MS, Word, and Excel compared to PowerPoint

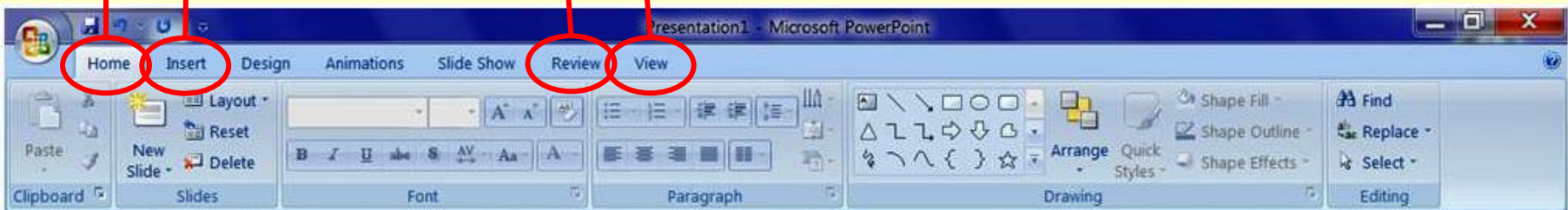
Word



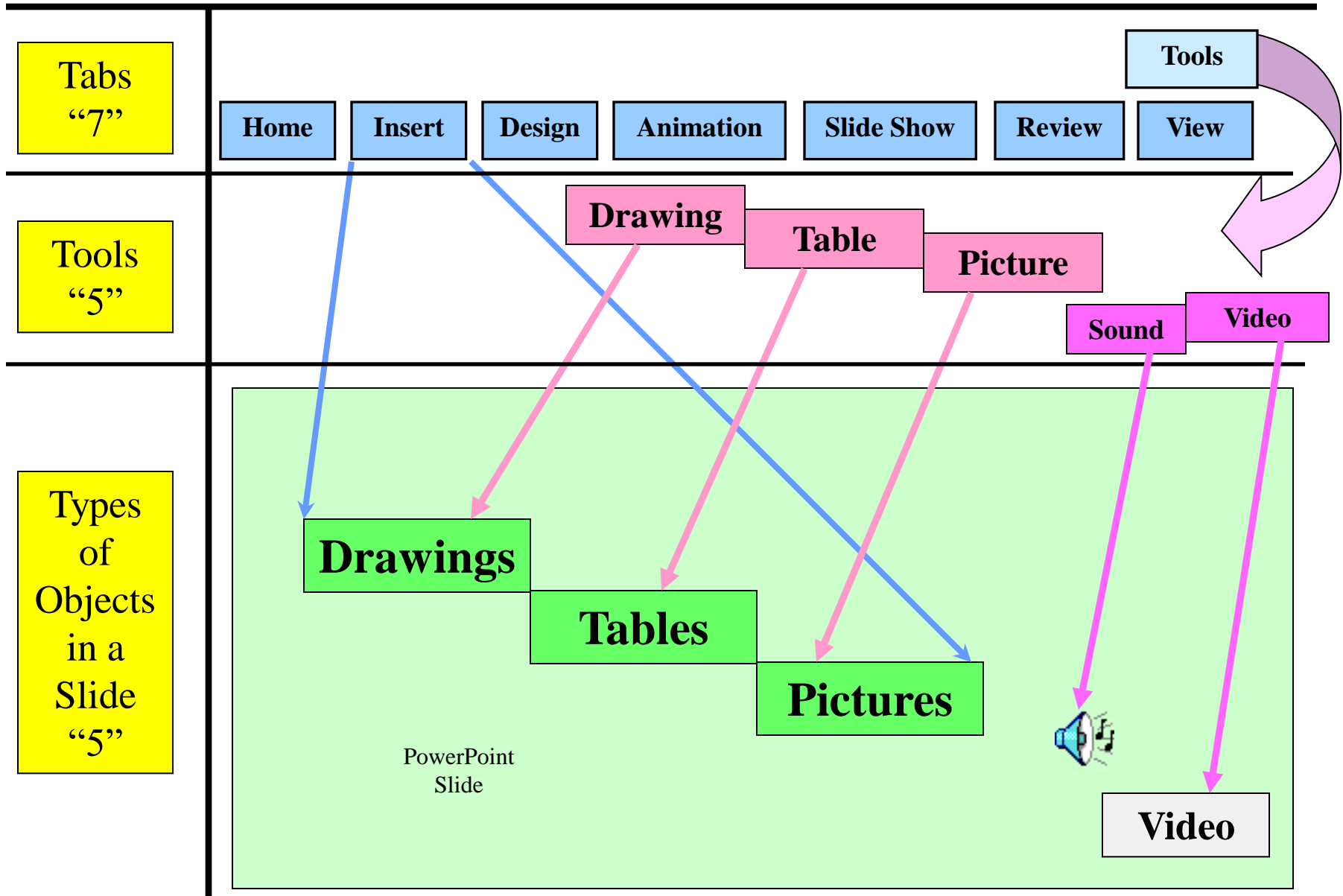
Excel



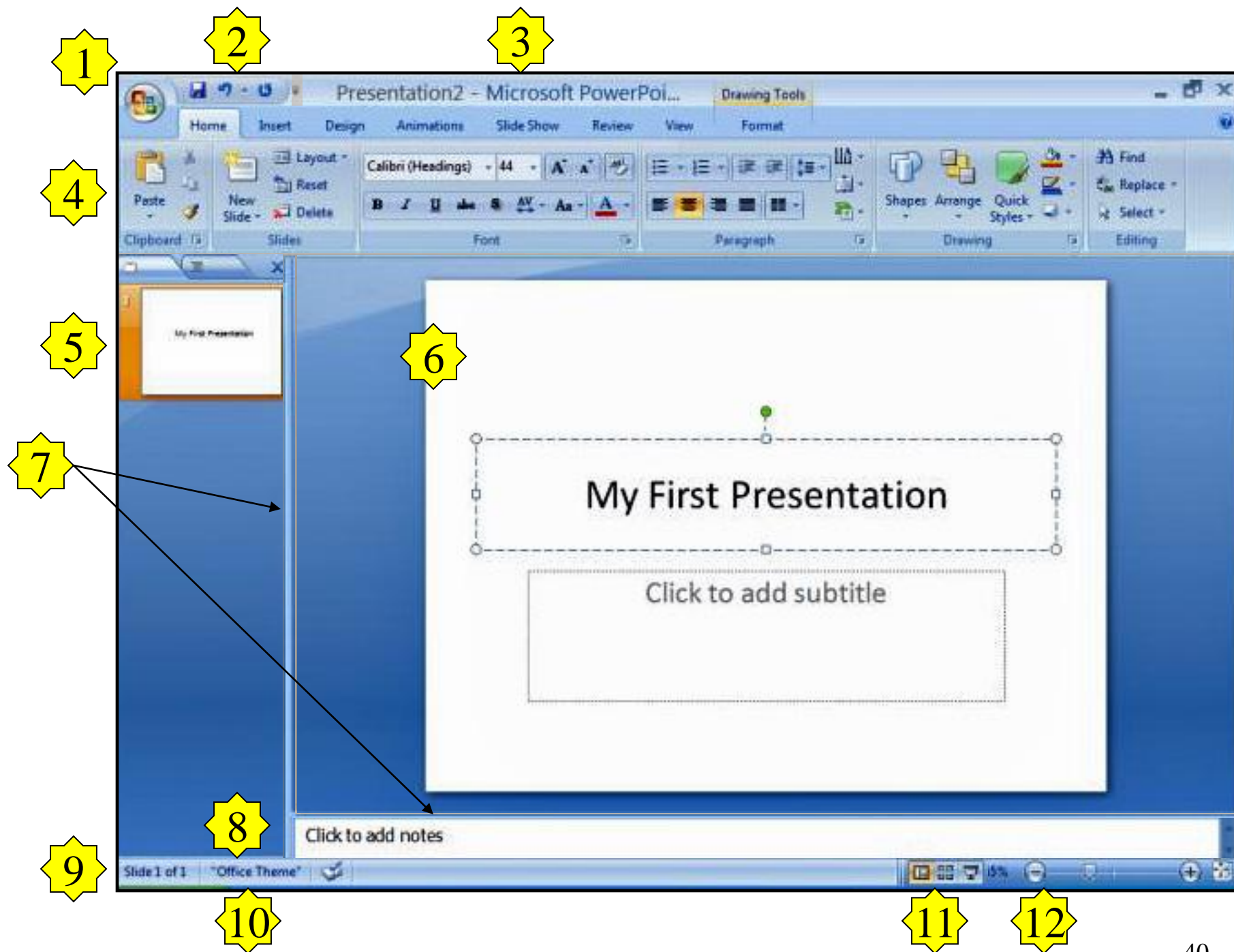
PowerPoint



# PowerPoint Simplified









# How Can I View My Slides?

Print the slides on any printer

The file (slides) can be emailed to another computer where they can be viewed or shown on a projector or television

PowerPoint slides may be saved as JPEG files:

- If the JPEG files are stored on a thumb drive it can be inserted into a television USB port for viewing
- If the JPEG's are burned onto a DVD the pictures can be played on most DVD players to any television
- The JPEG files can be printed like any other photo

The PowerPoint program can show the slides in a continuous loop at a selectable interval

The Next Scheduled  
CLiC PowerPoint Class:

**October 07-16, 2014**

Questions